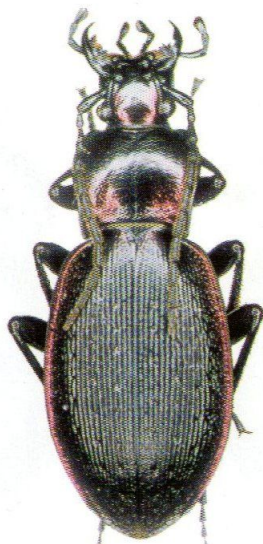
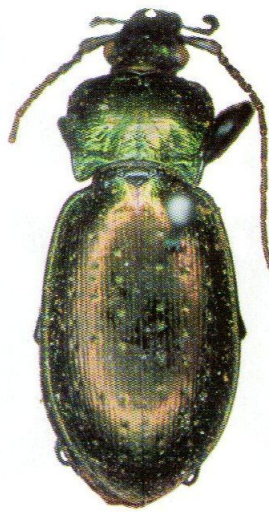


193



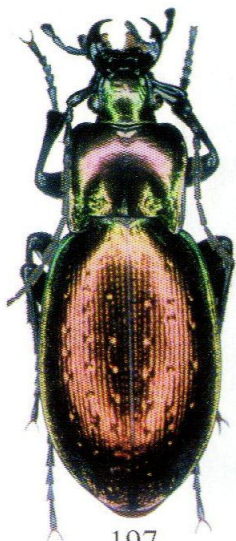
194



195



196



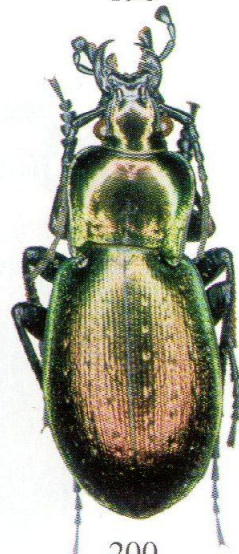
197



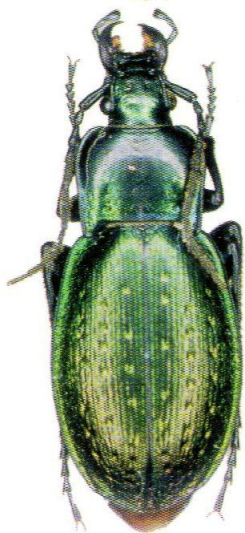
198



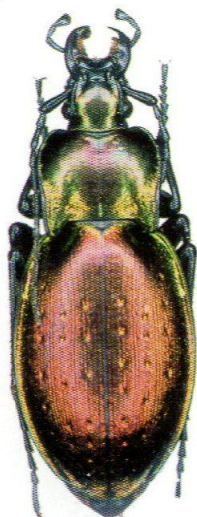
199



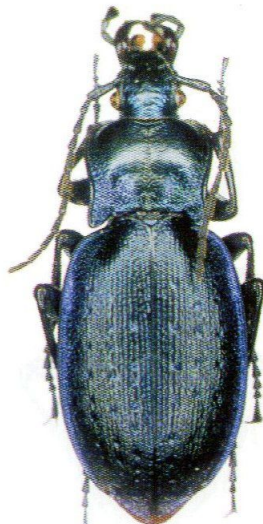
200



201



202



203



204

193. *Heterocarabus marietti* ssp. *ativsengueni*, femelle, Bolu : Mengen; 194. *Heterocarabus marietti* ssp. *necopinatus*, femelle, Cankiri : Ismetpasa; 195-197. *Heterocarabus bischoffi* ssp. *bischoffi*, mâle, HOLOTYPE, MNHNP, « Turquie, mont Ararat », mâle, Samsun : Kavak, femelle, Ordu : forêt d'Akkus, 1.400 m; 198. *Heterocarabus bischoffi* ssp. *balboi*, femelle, HOLOTYPE, Bolu Dag; 199. *Heterocarabus bischoffi* ssp. *mouthiezi*, mâle, Kastamonu : Pinarbasi; 200-202. *Heterocarabus bischoffi* ssp. *ornatus*, mâle, Kastamonu, Yaraligöz Dag, 1.400m, femelle, Sinop : nord de Gokçeagaç, 1.450 m, femelle, Sinop : Incemeydan, 400 m; 203. *Heterocarabus bischoffi* ssp. *muchei*, femelle, Cankiri/Kastamonu, Ilgaz Dag, 1.700 m; 204. *Heterocarabus bischoffi* ssp. *stephaniruspolii*, mâle, Sinop, Dranaz Gecidi.