

145



146



147



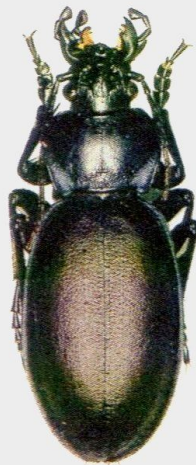
148



149



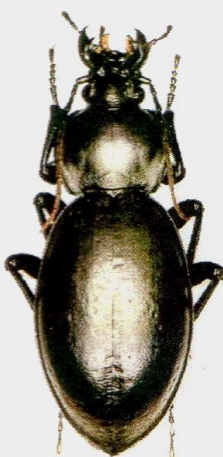
150



151



152



153



154



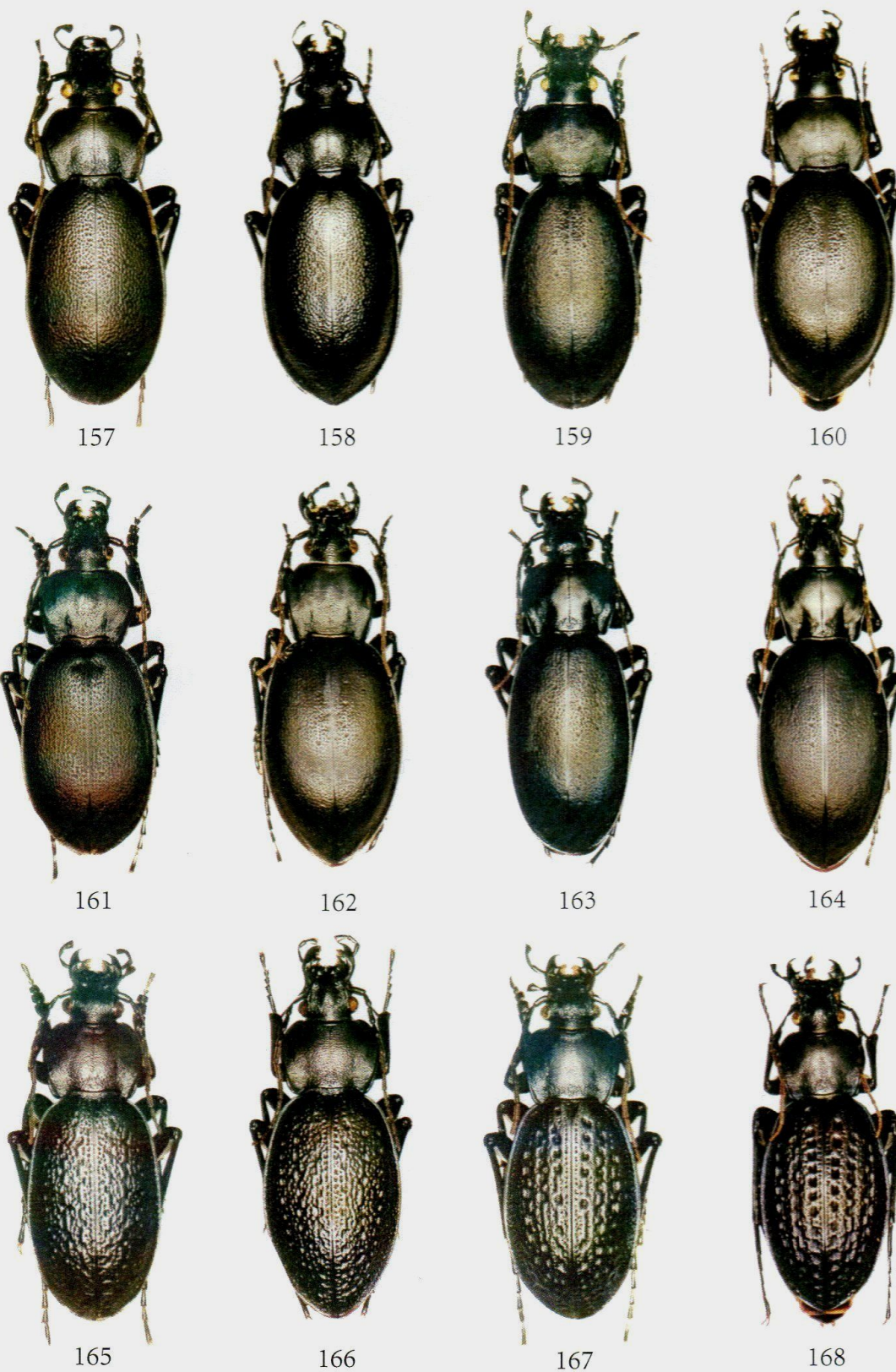
155



156

145-146. *Carabus (Procrustes) anatolicus* ssp. *anatolicus* Chaudoir (♂ e ♀, Isola di Cypro, Pamabousae); 147-148. *C. (P.) anatolicus* ssp. *lycicus* Breuning (♂, Antalya, 200 m; ♀, Antalya: Kale, 0 m); 149-150. *C. (P.) anatolicus* ssp. *resslianus* Mandl (♂ e ♀, dint. di Mersin); 151. *C. (P.) clypeatus* ssp. *kurnakovi* Kryzhanovskij (♂, dint. di Kars); 152-153. *C. (P.) impressus* ssp. *foveolator* Deuve (♂ e ♀, Antakya: Sud Hatay); 154. *C. (P.) impressus* ssp. *simulacrum* Rapuzzi (PT ♀, Gaziantep: 25 km W Kilis, 700 m); 155-156. *C. (P.) coriaceus* ssp. *kindermanni* Walzl (♂, Tekirdag, Saray; ♀, Istanbul: Ömerli).





157-158. *Carabus (Procrustes) coriaceus* ssp. *olympicus* Géhin (♂ e ♀, Bursa: Ulu Dag, 1200 m); 159-160. *C. (P.) coriaceus* ssp. *mopsucrenae* Peyron 1858 (♂ e ♀, Afyon: Sultan Dag); 161-162. *C. (P.) coriaceus* ssp. *muglaensis* Deuve (♂ e ♀, Mugla: Bayr); 163-164. *C. (P.) coriaceus* ssp. *ressli* Mandl (♂ e ♀, Adana : Osmaniye, Yarpuz); 165-166. *C. (P.) chevrolati* ssp. *internatus* Heinz & Korge (♂ e ♀, Bolu: Abant, 1500 m); 167-168. *C. (P.) chevrolati* ssp. *ilgazdagensis* Schweiger (♂ e ♀, Kastamonu: Ilgaz Dag vers. Nord).