

See discussions, stats, and author profiles for this publication at:
<http://www.researchgate.net/publication/276183883>

The first recording of the species *Trichodes punctatus* Fischer von Waldheim, 1829 (Insecta: Coleoptera: Cleridae) for Romania

RESEARCH · MAY 2015

DOI: 10.13140/RG.2.1.1581.2000

READS

25

1 AUTHOR:



Daniel Kazimir Kurzeluk

Institute of Plant Protection Research ...

15 PUBLICATIONS 1 CITATION

SEE PROFILE

THE FIRST RECORDING OF THE SPECIES *TRICHODES PUNCTATUS* FISCHER VON WALDHEIM, 1829 (INSECTA: COLEOPTERA: CLERIDAE) FOR ROMANIA

Daniel Kazimir KURZELUK

Independent researcher, kurzelukdaniel@yahoo.com

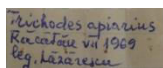
Introduction

The species' *Trichodes punctatus* Fischer von Waldheim, 1829 range given in the speciality literature encompasses all Romania, with the exception of Banat, Crişana and Maramureş historical provinces (the North-Western part of the country). Gerstmeier (1998) presumed its existence in Romania.

It's a species quite difficult to differentiate from *T. favarius* (Illiger, 1802), due to their similarity. The discreteness and the variability of the diagnostic characters, as well as the rareness of the species have let it unidentified (or mistaken for *T. favarius*) until now in Romania.

Material and methods

- Nikon S200 camera
- Literature (see: Bibliography)
- Hand lens (10x)
- The material conserved in the entomological collection of the Natural Sciences Museum of Tirgu Mures

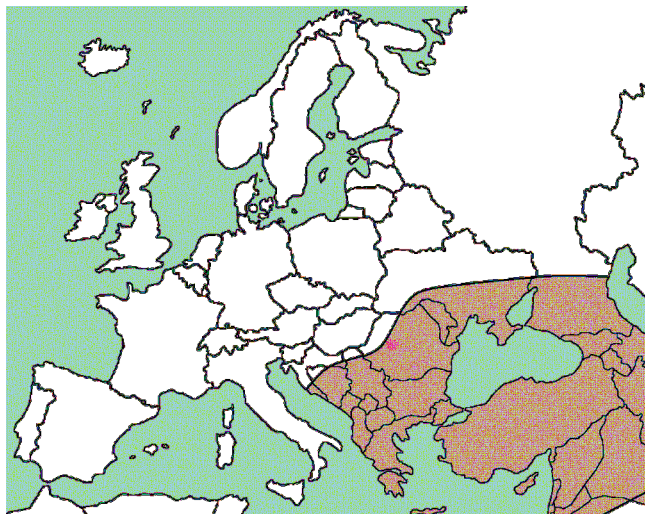


Original label
(Photograph by Zoltan Szombath)



Trichodes punctatus ab. *viridifasciatus* –Investigated specimen (dorsal and lateral view)

(Photographs by Zoltan Szombath)



Species range according to the literature and the new record – red spot

(Taken ad adapted from Gerstmeier)

Bibliography

- ❖Corporaal Johann Bastiaan, *Coleopterorum Catalogus Supplementa*, edita a W.D. Hincks, Pars 23: (Editio secunda), J.B. Corporaal, *Cleridae*, Uitgeverij Dr. W. Junk, s'Gravenhagen 22. XII. (1950).
- ❖Gerstmeier Roland, *Checkered Beetles, Illustrated Key to the Cleridae and Thaneroceridae of the Western Palaearctic*. In: Margraf Verlag, Weikersheim (1998).
- ❖Löbl Ivan, Rolčik Jakub, Kolibač Jiri, Gerstmeier Roland, In: Löbl Ivan, Smetana Aleš, *Catalogue of Palaearctic Coleoptera. Vol. 4, Elateroidea, Derodontoidea, Bostrichoidea, Lymexyloidea, Cleroidea, Cucujoidea*. In: *Apollo Books, Stenstrup, Denmark* (2007).
- ❖Petri Karl, *Siebenburgens Kaeferfauna auf grund ihrer forschung, bis zum jahre 1910, Hermannstadt*. Buchdruckerei Jos. Drotleff (1912).

Acknowledgements: My sincere thanks to Dr. Zoltan Soos, Head of the Museum of Tirgu Mures, for its kindness and the permission to access the Museum's collections. To Dr. Roland Gerstmeier, great thanks for the kind confirmation of the species and for the quick answer. To Zoltan Szombath, for its help during the examination of the material and for the photographs of the specimen and its label, all my gratitude. Last, but not least, thanks to Dr. Mihaela Samarghitan and to all the staff of the museum, for helping me in various ways during my visit.

Character	<i>Trichodes favarius</i> (Illiger, 1802)	<i>Trichodes punctatus</i> Fischer von Waldheim, 1829	ab. <i>viridifasciatus</i> Chevrolat, 1843
Length	8-18 mm	7-19 mm	
Elytral bands	All of them reaching the pleural margin	All of them not reaching the pleural margin	Posterior one reaching the pleural margin
apical spot	not bordered reddish-orange or at most a slightly externally developed basalad process	bordered reddish-orange, at least half of its basalad third to almost all of the elytral apex	variable, from not bordered reddish-orange to bordered at most its half
	occupying almost all of the elytral apices, reaching the sutural angle	not occupying the entire elytral apices, not reaching the sutural angle	occupying the entire elytral apices, variable, from not reaching to reaching the sutural angle
Sutural angle	rounded	rounded to straight	straight to feebly emarginated
	not presenting a process		presenting a feeble developed acuminate process
Metasternal process	not prominent +/- rounded	prominent right-angled	
	not presenting a +/- evident median groove	presenting a +/- evident median groove	
Posterior femora	slightly dilated	slightly more dilated than in <i>T. punctatus</i>	
Pubescence around the knee of the hind legs	black	grey	
Posterior tibia	straight	recurbate	less recurbate, almost straight.
Hind tibial spur	almost right distally bifurcate (anvil-like)	+/- curved simple	

Differential diagnosis characters of *Trichodes favarius* and *T. punctatus*

Results and discussions

As the examined specimen was collected 45 years ago, it's quite probable that further specimens belonging to these species are held in Romanian collections.

The differential diagnosis of the two species (including the *T. punctatus* ab. *viridifasciatus* Chevrolat 1843) provided here could help the identification of those ones, or of the ones which will be collected in the future.

The most sure character is the morphology of the male copulatory organ. In the case of a female (as the specimen investigated), the external morphology characters remain the principal attributes for its identification.

Conclusions

Based on the identity of the examined specimen, the presence of *Trichodes punctatus* is ascertained, as **new species for Romania**. The careful investigation of the remaining Romanian museal heritage is needed, in order to confirm the distribution of this species on the territory of our country