

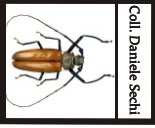
Coll. Daniele Sechi

Hypocephalini - Vesperini - Mysteriini
Hypocephalus - Vesperus - Pathocerus



Coll. Daniele Sechi

Disteniini - Parandrini - Acanthophorini
Distenia - Tengius - Parandra
Ceratocentrus - Tithoes - Anthracocentrus



Coll. Daniele Sechi

Aegosomatini - Callipogonini
Aegosoma - Enoplocerus - Callipogon - Ctenoscelis



Coll. Daniele Sechi

Calocomini - Closterini - Ergatini - Macrotomini
Calocomus - Closterus - Ergates - Prinobius
Bandar- Macrotoma - Chiasmetes - Navosomopsis



Coll. Daniele Sechi

Macrotomini - Macrodoniini
Tersec - Acanthinodera - Macrodonia



Coll. Daniele Sechi

Mallaspini - Mallodontini - Meroscelisini - Prionini
Pyrodes - Scatopyrodes - Mallodon - Nothopleurus
Tragosoma - Apterocaulus - Derobrachus



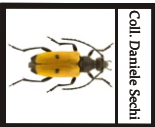
Coll. Daniele Sechi

Prionini



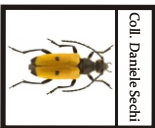
Coll. Daniele Sechi

Prionini
Prionus - Psalidognathus - Titanus



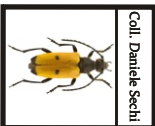
Coll. Daniele Sechi

Desmocerini - Encylopini - Holopterini - Lepturini
Desmocerus - Encylops - Holopterus
Alosterna > Konoa



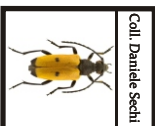
Coll. Daniele Sechi

Lepturini
Grammoptera > Pachytodes



Coll. Daniele Sechi

Lepturini
Paracorymbia > Stenurella



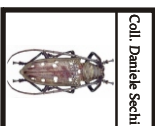
Coll. Daniele Sechi

Lepturini
Stictoleptura > Vadonia



Coll. Daniele Sechi

Remphanini
Rhaesus - Raphipodus



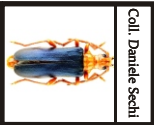
Coll. Daniele Sechi

Batocerini II
Batocera



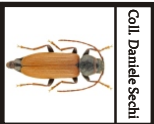
Coll. Daniele Sechi

Oxymirini - Rhagiini
Oxymirus - Acmaeops > Paragaurotes



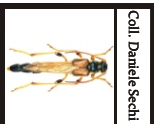
Coll. Daniele Sechi

Rhagiini - Rhamnusiini - Xylosteini
Pidonia > Rhamnusium
Leptorhabdium - Xylosteus



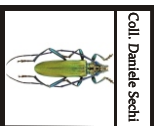
Coll. Daniele Sechi

Dorcasomini - Apatophysini - Anisarthronini
Asemini - Saphanini - Spondylidini



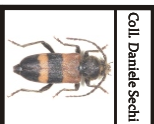
Coll. Daniele Sechi

Oxypeltini - Necydalini - Achrysonini - Anaglyptini
Bimiini - Brachypteromini - Callichromatini



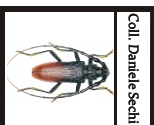
Coll. Daniele Sechi

Callichromatini
Aromia - Chloridolum
Osphranteria - Pachyteria - Plinthocoelium - Polyzonus



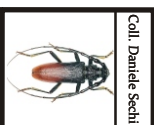
Coll. Daniele Sechi

Callidiini - Callidiopini
Batyle - Callidiellum - Callidium - Leioderes - Lioderina - Lucasianus - Phymatodes
Pronocera - Pyrrhidium - Ropalopus - Semanotus - Sternangustum - Ceresium



Coll. Daniele Sechi

Cerambycini
Aeolesthes - Cerambyx



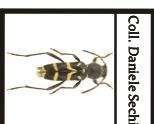
Coll. Daniele Sechi

Cerambycini
Cerambyx - Cyriopalus - Derolus - Dissaporus



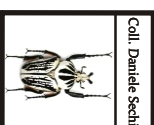
Coll. Daniele Sechi

Cerambycini - Certallini - Cleomenini - Clytini
Hoplocerambyx > Trirachys
Certallum - Dere - Brachyclytus - Chlorophorus



Coll. Daniele Sechi

Clytini
Chlorophorus > Plagionotus



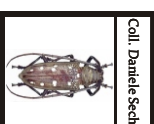
Coll. Daniele Sechi

Goliathus *Goliathini*



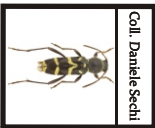
Coll. Daniele Sechi

Goliathus *Goliathini*



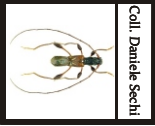
Coll. Daniele Sechi

Batocerini I
Abatocera - Apriona - Batocera



Coll. Daniele Sechi

Clytini - Compsocerini - Deilini - Eburini
Plagionotus > Xylotrechus - Achenoderus - Chenoderus
Compsocerus - Maripanus - Unxia - Deilus - Delagrangus - Eburia



Coll. Daniele Sechi

Elaphidini - Eumichthini - Graciliini - Heteropsini
Hylotruperini - Iridionini - Lissonotini - Molochini



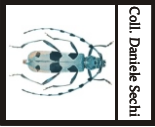
Coll. Daniele Sechi

Hesperophanini
Brothylus - Cerasphorus - Hesperoferus - Hesperophanes
Phymatoderus - Stromatium - Trichoferus - Tropicophanes - Tylonotus



Coll. Daniele Sechi

Nathriini - Oabriini - Oemini - Plectogasterini
Phoracanthini - Purpuricenini I



Coll. Daniele Sechi

Purpuricenini II - Rhopalophorini - Rosaliini - Smodicini - Stenhomalini - Stenopterini
Purpuricenus - Crioprosopus - Euryphagus - Rhopalophora - Rosalia
Smodicum - Stenhomalus - Callimoxys - Callimus - Merionoeda



Coll. Daniele Sechi

Tillomorphini - Tmesisterini - Trachyderini - Xystrocerini
Eudercus - Tmesisternus - Andraegoidus - Batus - Crossidius - Dichelosternus - Dorcadocerus
Mannophorus - Perarthrus - Retrachydes - Stenaspis - Sternacanthus - Trachyderes - Tragidion - Xystrocera



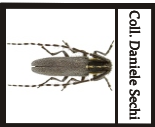
Coll. Daniele Sechi

Meloe - Physomeloe - Pseudomeloe *Meloini*
Afromeloe - Cyaneolytta



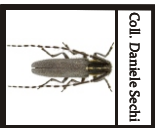
Coll. Daniele Sechi

Acanthocinini - Acanthoderini
Acanthocinus - Astyleiopus - Astylopsis - Coenopoeus - Glaucoetes - Graphisurus - Hyperplatys - Leiopus - Lepturges
Rondibilis - Sternidius - Trichocanonura - Urgleptes - Acanthoderes - Aegomorphus - Azygocera



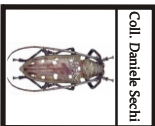
Coll. Daniele Sechi

Acrocini - Agallissini - Agapanthiini I
Acrocinus - Macropophora - Osmopleura
Calamobius - Hippopsis - Pothyne - Pseudocalamobius - Theophilea



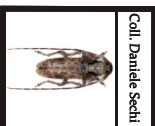
Coll. Daniele Sechi

Agapanthiini II
Agapanthia



Coll. Daniele Sechi

Batocerini II
Batocera - Rosenbergia



Coll. Daniele Sechi

Ancyronotini - Apodasyini - Apomecynini - Ceroplesini
Desmiphorini - Dorcashematini - Forsteriini - Gnomiini
Lasiopezus - Palimna - Anaesthetis - Deroplia - Miccolamia - Analeptes - Thysia - Crossotus - Dichostates - Frea - Megalofrea
Moechotypa - Mycerinus - Estola - Eupogonius - Psenocerus - Dorcaschema - Olenecamptus - Neohebestola - Gnoma - Macrochenus



Coll. Daniele Sechi

Dorcadionini I
Dorcadion - Eodorcadion



Coll. Daniele Sechi

Dorcadionini II
Iberodorcadion - Neodorcadion - Politodorcadion



Coll. Daniele Sechi

Lamiini - Monochamini I
Herophila - Lamia - Morimus
Acalolepta - Anhammus



Coll. Daniele Sechi

Monochamini II
Anoplophora - Aristobia - Cereopsius - Gerania- Nemophas
Neoptychodes - Pharsalia - Plectrodera - Pseudonemophas



Coll. Daniele Sechi

Monochamini III
Monochamus - Taeniotes



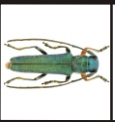
Coll. Daniele Sechi

Mesosini - Moneilemini - Onciderini - Parmenini
Choeromorpha - Coptops - Mesosa - Moneilema - Lochmaeocles
Oncideres - Lepromoris - Microcleptes - Parmena



Coll. Daniele Sechi

Petrognathini - Phacellini - Phantasini
Phrynetini - Phytoeciini I (Mallosia)



Coll. Daniele Sechi

Phytoeciini II
Nupserha - Oberea - Oxylia - Phytoecia



Coll. Daniele Sechi

Phytoeciini III - Pogonocherini - Prosopocerini
Pteropliini - Rhodopinini - Saperdini I



Coll. Daniele Sechi

Saperdini II - Xenoleini - Xylorhizini
Menesia - Saperda - Stenostola
Xenolea - Thylactus- Xylorhiza



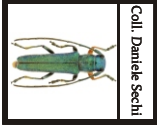
Coll. Daniele Sechi

Sternotomini - Tetraopini - Tragocephalini
Freadelpha - Pterochaos - Stellognatha - Sternotomis
Zorographus - Tetraopes - Tetrops - Chariestes - Murosternum - Tragocephala



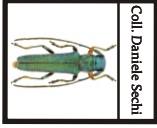
Coll. Daniele Sechi

Phytoeciini I
Mallosia - Nupserha - Oberea



Coll. Daniele Sechi

Phytoeciini II
Oxyilia - Phytoecia



Coll. Daniele Sechi

Phytoeciini III - Pogonocherini - Prosopocerini
**Phytoecia - Ecyrus - Pogonocherus
Bangalaia - Prosopocera**



Coll. Daniele Sechi

Pteropliini - Rhodopinini - Saperdini I
**Callimetopus - Mesosella - Niphona - Pterolophia
Nicarete - Eutetrappa - Glenea - Menesia**



Coll. Daniele Sechi

Saperdini II
Paraglenea - Praolia - Saperda - Stenostola



Coll. Daniele Sechi

Disteniini - Parandrini - Acanthophorini
**Distenia - Tengius - Parandra -
Ceratocentrus - Tithoes - Anthracocentrus**



Coll. Daniele Sechi

Disteniini - Parandrini - Acanthophorini
**Distenia - Tengius - Parandra -
Ceratocentrus - Tithoes - Anthracocentrus**

