

REVISION OF THE *OMASPIDES AUGUSTA* GROUP (COLEOPTERA: CHRYSOMELIDAE: CASSIDINAE: MESOMPHALIINI)

LECH BOROWIEC

¹*Department of Biodiversity and Evolutionary Taxonomy, Zoological Institute,
University of Wrocław, Przybyszewskiego 63/77, 51-148 Wrocław, Poland;
e-mail: cassidae@biol.uni.wroc.pl*

Abstract.— *Omaspides augusta* group is revised. *Omaspides augusta* Boheman, 1856, *O. bivittata* Baly, 1872, and *O. tenuicula* Boheman, 1862 are redescribed. Two species are described as new: *O. confusa* sp. nov. (Ecuador) and *O. picaflourensensis* sp. nov. (Peru). Two genera of Convolvulaceae plants, *Merremia* Dennst. ex Endl. and *Turbina* Raf., are recorded as hosts for the genus *Omaspides* Chevrolat, 1836 for the first time.



Key words.— Entomology, taxonomy, new species, Coleoptera, Chrysomelidae, Cassidinae, Mesomphaliini, *Omaspides* s. str., Neotropical Region.

INTRODUCTION

The genus *Omaspides* Chevrolat, 1836 comprises 38 species, divided into three subgenera (Borowiec 1999, Borowiec 2003, Borowiec and Świętojańska 2010), 31 of them belong to the nominotypical subgenus. Members of the nominotypical subgenus were keyed by Spaeth (1937) and recently by Borowiec (2003).

In mountain regions of South America, especially in Ecuador, Peru, and Bolivia, occurs a group of species characterized by elytral disc and/or explanate margin with more or less distinct reticulate sculpture. The group comprises hitherto three species: *O. augusta* Boheman, 1856, *O. tenuicula* Boheman, 1862 and *O. bivittata* Baly, 1872. The group looks coherent and I propose the name *Omaspides augusta* group for these species. Revision of type material of *O. tenuicula* Boheman, 1862 and *O. bivittata* Baly, 1872, supplemented with review of the new material showed that both, *O. tenuicula* Boh. and *O. bivittata* Baly were misinterpreted in my previous key (Borowiec 2003). Moreover, it revealed that the group is more speciose with at least two undescribed species. Its revision is given below.

Abbreviations:

- DBET – Department of Biodiversity and Evolutionary Taxonomy, University of Wrocław, Wrocław, Poland;
IMC – Insectarium, Ville de Montréal, Montréal, Canada;
LS – coll. L. Sekerka, Faculty of Science, University of South Bohemia, České Budějovice, Czech Republic;
MS – coll. M. Snižek, České Budějovice, Czech Republic;
NHM – Natural History Museum, London, United Kingdom.

REVIEW OF SPECIES

Omaspides augusta Boheman, 1856

Omaspides augusta Boheman, 1856: 92, 1862: 230; Gemminger and Harold, 1876: 3644; Spaeth, 1914: 55, 1937: 93, 1942: 29; Blackwelder, 1946: 744; Borowiec, 1996: 205, 1998: 178, 1999: 121, 2009: 688.

Type material. Type location unknown. According to Boheman (1856) original description based on specimen from Castelnau collection housed in Paris museum, but during my stay in Paris I did not found the type. The interpretation of the species in this work based on Boheman's original description (1856) and interpretation of *Omaspides augusta* in Spaeth's key (1937: p. 37).

Material examined. "Perú, Chanchamayo, Hoffmans", 2 exs. (DBET); "Peru: Iquitos, San Roque", 2 exs. (DBET); "Ost Peru, Iquitos, 1929", 1 ex. (DBET); "Perou, Stauding.", 1 ex. (DBET); "Peru, Reg. Iquitos, Mishuyaeu, I-1937", 1 ex. (DBET); "Peru, Iquitos", 1 ex. (DBET). For other material examined see Borowiec (1996: 205, 2009: 688).

Diagnosis. *Omaspides augusta* is easily distinguished by explanate margin of elytra with broad reticulation. Only *O. picaflourensensis* has similar broad reticulation but differs in reddish pronotum and also in elytral disc with broad reddish reticulation on whole surface (in *O. augusta* pale reticulation of disc, if present, occupies only posterolateral slopes of disc). Both species differ also in host preferences as *O. augusta* feeds only on *Ipomoea* sp. while *O. picaflourensensis* feeds on *Merremia* sp. and *Turbinia* sp. (R. Westerdijk, letter inf.).

Description. Length: 13.5–14.8 mm, width: 13.4–14.2 mm, length of pronotum: 3.7–4.0 mm, width of pronotum: 6.9–7.7 mm, length/width ratio: 1.00–1.06, width/length of pronotum ratio: 1.83–1.95 (Figs 1, 2).

Pronotum black, with indistinct blue or green metallic tint, anterior margin narrowly reddish. Elytral disc black, with more or less distinct blue metallic tint, in some specimens posterolateral parts of disc with red, thin reticulation. Explanate margin black, with more or less distinct blue metallic tint, in the middle with large, reddish reticulate spot, dark lateral margin broad. Ventrites mostly dark brown to black, posterior margin of abdominal sternites narrowly yellowish, sides of sternites with small, transverse dilute reddish-brown spots (Fig. 3).

Pronotum almost regularly semicircular. Disc on whole surface microreticulate, dull, with several fine pricks and very narrow and short median line.

Elytra broad, humeri regularly rounded, apex almost regularly rounded. Disc evenly convex (Fig. 4), in the middle with very low reticulate sculpture, if reticulation reddish then slightly more elevated than on dark parts of disc. Fields of reticulation finely and densely punctate, distance between punctures mostly narrower than puncture diameter. Net of reticulation mostly impunctate, except punctate basal and sutural parts of disc. Surface microreticulate, dull. Explanate margin of elytra in the widest part slightly less than twice narrower than disc, with broad reddish

reticulation, both, fields and reticulation, with fine punctation, punctures distinctly finer than those of disc.

Host plant. Convolvulaceae: *Ipomoea* sp. (R. Westerdijk letter inf.), new host record.

Distribution. The most widely distributed species of the group. Recorded from Bolivia: Yungas de la Paz; Colombia: Rio Tacana; Ecuador: Mera; Peru: Chanchamayo, Cuschi, Huallaga, Huanuco, Iquitos, Pachitea, Pozuzo.

Omaspides bivittata Baly, 1872

Omaspides bivittata Baly, 1872: 70; Gemminger and Harold, 1876: 3644; Spaeth, 1914: 55, 1937: 92; Blackwelder, 1946: 744; Borowiec, 1999: 121.

Type material examined. Holotype: "Ecuador" (small, narrow white rectangle) / "Type" (white circle with red margin) / "Baly Coll., 1905-54." (small white square) / "Omaspides bivittata Baly, Ecuador" (large blue rectangle); preserved in NHM.

Diagnosis. *Omaspides bivittata* differs from all species of the group by explanate margin of elytra mostly reddish with only rudiments of reticulate sculpture and without reticulate pattern. *Omaspides augusta* has also explanate margin of elytra largely pale coloured but the pattern forms reticulation. Red reticulate morph of *O. confusa* distinctly differs in explanate margin and elytral disc with reticulate red sculpture. Completely black form of *O. confusa* differs in explanate margin of elytra uniformly black but with distinct reticulate sculpture. *Omaspides picaflourensensis* differs in red pronotum and whole elytra with reticulate pattern. *Omaspides tenuicula*, like *O. bivittata*, has reduced reticulate sculpture on explanate margin of elytra but differs in elytral disc without pale pattern and with reticulate sculpture limited to only central part of the disc.

Description. Length: 13.3 mm, width: 12.4 mm, length of pronotum: 3.2 mm, width of pronotum: 6.9 mm, length/width ratio: 1.07, width/length of pronotum ratio: 2.16 (Fig. 5).

Pronotum black, with indistinct cupreous metallic tint, anterior corners narrowly reddish-brown. Elytral disc black, with indistinct cupreous metallic tint, reticulation on sides of disc partly red. Explanate margin mostly yellowish-red with broad black margin (Fig. 5). Ventrites mostly brownish-black, sides of sternites with small transverse, reddish spots, posterior margin of sternites narrowly reddish (Fig. 6).

Pronotum almost regularly semicircular, anterior margin very shallowly emarginate. Disc on whole surface microreticulate, dull, with several fine pricks and very short narrow median line.

Elytra broad, humeri regularly rounded, apex only slightly angulate. Disc moderately convex with slightly marked postscutellar elevation (Fig. 7), on whole surface with thin reticulation only in extreme apex the reticulation partly diffused. Fields of reticulation with distinct and dense punctation, punctures almost touching each other. Surface appears microreticulate, dull, only reticulation slightly shiny. Explanate margin of elytra in the widest part slightly less than twice narrower than disc. Yellowish-red spots of explanate margin with irregular fine punctation but without reticulate sculpture. Punctures in central part of the spot approximately thrice finer than those on disc, towards sides of the spot gradually increased and along dark margin only slightly finer than those on disc. Dark margins of the explanate margin impunctate. Interspaces microreticulate and dull.

Distribution. Known only from the holotype labelled “Ecuador”. Recent records from Ecuador (Borowiec 1996, 1998) belong to *Omaspides confusa* sp. nov.

Omaspides tenuicula Boheman, 1862

Omaspides tenuicula Boheman, 1862: 233; Gemminger and Harold, 1876: 3644; Spaeth, 1914: 56, 1937: 90, 1942: 29; Blackwelder, 1946: 744; Borowiec, 1999: 123.

Type material examined. Holotype: “Type” (white circle with red frame) / “Peru, Baly Coll., 1905-54.” (small white square) / “*Omaspides tenuicula* boh., Peru” (large white rectangle); preserved in NHM.

Diagnosis. *Omaspides tenuicula* distinctly differs from all members of the group in very low elytral reticulate sculpture perceptible only in the central part of disc and explanate margin without reticulation nor reticulate pattern. At first glance the most similar is *O. confusa* which also usually have dorsum without pale reticulation but differs in both, disc and explanate margin, with distinct reticulate sculpture and ground colour of elytra black with indistinct bronze tint, never metallic blue. *Omaspides tenuicula* is distinctly smaller than *O. confusa* with length below 12 mm, while the smallest specimens of *O. confusa* have length above 13 mm.

Description. Length: 11.8 mm, width: 11.1 mm, length of pronotum: 3.3 mm, width of pronotum: 6.2 mm, length/width ratio: 1.06, width/length of pronotum ratio: 1.88 (Fig. 8).

Pronotum black, with blue metallic tint only anterior margin narrowly reddish. Elytra black, with blue metallic tint, explanate margin in the middle with large dilute dark reddish spot occupying inner $\frac{2}{3}$ space of the margin (Fig. 8). Ventrites mostly black, posterior margin of abdominal sternites yellowish,

sides of sternites with dilute reddish-brown spots (Fig. 9).

Pronotum almost regularly semicircular. Disc on whole surface microreticulate, dull, with several fine pricks and very narrow median line.

Elytra broad, humeri regularly rounded, apex only slightly angulate. Disc evenly convex (Fig. 10), only in the middle with very low reticulate sculpture, puncturation fine, moderately dense with interspaces mostly wider than puncture diameter. Punctures disposed mostly regularly both on net as well as its inside fields. Surface microreticulate, dull. Explanate margin of elytra in the widest part approximately twice narrower than disc, its surface slightly finer and denser punctate than disc, dull, without reticulate sculpture, only with hardly visible rudiments of reticulation.

Distribution. Known only from the holotype labelled “Peruvia”. Recent records from Ecuador (Borowiec 1998, 2002) belong to *Omaspides confusa* sp. nov.

Omaspides confusa sp. nov.

Omaspides tenuicula: Borowiec, 1998: 179, 2002: 105 (misinterpretation).

Omaspides bivittata: Borowiec, 1996: 205, 1998: 178 (misinterpretation).

Etymology. Named due to the confusion and misinterpretation of this species in my previous works (Borowiec 1996, 1998, 2002).

Type material examined. Holotype (completely black form): “Ecuador, Pastaza, Bosque Villano, 10 Jul 1996, J. Naranjo” (DBET); paratype (completely black form): “Ecuador, Pichincha, Tinalandia, 800 m, 3 En 1997, D. Guerrero” (DBET); Paratype (completely black form): [Ecuador]: “Provincia de Napo [nowadays Orellana prov.], Loreto, Fecha: 7-12-91, col.: C. Segovia” (DBET); paratype (completely black form): “Ecuador E, [Pastaza prov.] Cononaco, Curaray riv., 27.2.–2.3.2010, Prouza lgt.” (MS); Paratype (completely black form): “Ecuador, Napo, X-95-IV-1996, leg. Jose A. Pena” (DBET); Paratype (completely black form): “Napo-Ecuador, Río Hollin, 1100 m, 4-Dic-1994, Santiago Espinosa” (DBET); paratype (red reticulate form): “Ecuador, Río Hollin via Loreto, 1100 m, 09 Dec 1995, T Lozada” (DBET); paratype (red reticulate form): “Ecuador, Palora, Prov. Moronasantiago, 28.XI.1994, leg. A. Jadwiszczak” (DBET); paratype (red reticulate form): “Ecuador, [Pastaza prov.] Arajuno, San Ramon, 30.I.2000, Bačovský lgt.” (DBET); paratype (red reticulate form): “Ecuador, Napo, Río Hollin, 1100 m, 7 Dec 1996, Egortaire” (DBET); paratype (completely black form): “Ecuador, Napo Prov., Pununo oriente, 5 Nov., 02” (IMC); two paratypes (moderately red reticulate forms): “Ecuador, Napo prov., Río Hollín, 14.xii.2009,

Narupa-Loreto Rd., 1068 m, 0°43'04"S, 77°38'19"W, CON: *Ipomoea* cf. *phillomega*, L. Sekerka & K. Štájerová" (LS).

Diagnosis. Dark form of *Omaspides confusa* differs from all species of *O. augusta* group in completely black dorsum. Forms with red reticulation differ in structure of the reticulation which is thin with broad fields thus specimens appear mostly dark while *O. augusta* and *O. picaflorensis* have broad reticulation with small inside fields thus reticulate parts of elytra appear predominantly pale, yellowish to red. *Omaspides picaflorensis* also differs in red pronotum. *Omaspides bivittata* has reticulation of disc similar to *O. confusa* but differs in explanate margin mostly yellowish-red without distinct reticulation.

Description. Length: 13.4–15.1 mm, width: 11.6–14.6 mm, length of pronotum: 3.2–4.1 mm, width of pronotum: 6.8–7.8 mm, length/width ratio: 1.01–1.07 [single specimen 1.16], width/length of pronotum ratio: 1.71–2.10 (Figs 11–12, 15–16).

Pronotum black, with indistinct cupreous blue or green metallic tint, anterior margin completely black or anterior corners on short distance narrowly reddish. Elytra variable, in the most common form uniformly black, with indistinct cupreous metallic tint (Fig. 12), explanate margin also black or in fresh specimens in the middle with large dilute dark reddish spot occupying inner $\frac{2}{3}$ space of the margin (Fig. 11). In less common forms elytral reticulate sculpture forms thin, red reticulation (Figs 15, 16); in some forms it occupies only explanate margin, rarely also elytral disc with red reticulation. Ventrites usually completely dark brown to black, only occasionally posterior margin of abdominal sternites brownish red, and sides of basal sternite with dilute reddish-brown spot (Figs 13, 17).

Pronotum almost regularly semicircular, anterior margin straight or very shallowly emarginate. Disc on whole surface microreticulate, dull, with several fine pricks and extremely narrow median line.

Elytra broad, humeri regularly rounded, apex rounded to very slightly angulate. Disc evenly convex (Figs 14, 18), on whole surface with thin reticulate sculpture, puncturation of net fields moderate, dense with interspaces distinctly narrower than puncture diameter. Elevated reticulation impunctate or with punctures only along borders. Surface of fields microreticulate, dull, reticulation slightly shiny. Explanate margin of elytra in the widest part slightly wider than half width of disc, its surface at least in anterior third with thin reticulate sculpture, but in extreme forms whole surface of the margin reticulate. Punctation of the explanate margin distinctly finer and sparser than punctation of disc, forms with red reticulation usually slightly more coarsely punctate than completely black forms.

Host plant. Convolvulaceae: *Ipomoea phillomega* (Vell.) House.

Distribution. Known only from Ecuador: Morona-Santiago, Napo, Orellana, Pastaza, Pichincha.

Omaspides picaflorensis sp. nov.

Etymology. Named after its locus typicus Picaflor in Madre de Dios region of Peru.

Type material examined. Holotype: "PERU, Madre de Dios, Tambopata, Picaflor RC, 200 m, III 2003, R. Westerduijn" (DBET); 4 paratypes: "PERU, Madre de Dios, Tambopata, Picaflor RC, 200 m, secondary scrub, 28 XI 2006, R. Westerduijn" (DBET, LS); paratype: "S PERU, [Apurimac reg.] Rio Pumajacu, III 1996" (DBET).

Diagnosis. *Omaspides picaflorensis* differs from all species of *O. augusta* group by the red pronotum while in all remaining species it is black. The other species of the group have red reticulation finer and at least in anterior third of disc black colour dominate over red while in *O. picaflorensis* red reticulation covers whole surface of elytra thus they appear rather red with black maculation than black with red reticulation. Pale forms of *O. augusta* with elytral disc partly reticulate are similar but differ, except black pronotum, in host plant association as in the sympatric area its feeding was observed only on *Ipomoea* sp. while *O. picaflorensis* feeds on *Merremia* sp. and *Turbinia* sp. (R. Westerduijn, letter inf.). In Peru, except the new species, only *O. pulchella* Baly, 1859 is characterised by reddish pronotum but distinctly differs in elytra smooth, never reticulate, explanate margin of elytra with large yellow spot and apex of disc broadly yellowish-brown.

Description. Length: 12.3–14.6 mm, width: 12.3–14.6 mm, length of pronotum: 3.4–4.0 mm, width of pronotum: 6.5–7.7 mm, length/width ratio: 0.99–1.07, width/length of pronotum ratio: 1.76–1.92. Body broad (Figs 19–20), males slightly stouter than females.

Pronotum red. Elytra black with indistinct metallic blue tint, both, disc and explanate margin with broad red reticulation, inside fields small thus elytra appear predominantly red, dark lateral margin of elytra narrow (Figs 19–20). Thorax and abdomen mostly reddish brown, episterna, sides and posterior margin of sternites reddish (Fig. 21). Legs brown to black, antennae black, segments 1–3 partly or completely reddish-brown.

Pronotum almost regularly semicircular. Disc on whole surface microreticulate, dull, with very short and narrow median line.

Elytra broad, humeri regularly rounded, apex rounded to very slightly angulate. Disc evenly convex (Fig. 22), on whole surface with broad, very low reticulate sculpture. Dark inside fields mostly impunctate, only in basal part of elytra and along anterior half of

suture with few fine punctures. Red reticulation with fine punctation, punctures disposed irregularly, thus interspaces vary from as wide as to five times wider than puncture diameter. Surface microreticulate, dull. Explanate margin of elytra in the widest part approximately slightly less than twice narrower than disc, with broad, red and almost flat reticulation, dark inside fields impunctate, red reticulation similarly punctured as on disc.

Host plants. Convolvulaceae: *Merremia* sp. and *Turbinia* sp. (Rob Westerduijn letter inf.). Both the genera are new hosts for the genus *Omaspides* Chev.

Distribution. Known only from Peru: Apurímac and Madre de Dios.

Omaspides sp.?

Material examined. “Mt. Alegre, Rio Pachitea, O. Peru, G. Tessmann”, 1 ex.; Peru: Huanuco, Tingo Maria region, 6–14 June 1937, F. Woytkowski”, 1 ex. (both DBET).

Remarks. Two specimens from Peru belonging to *O. augusta* group differ from all species in characteristic dorsal pattern with broad, yellow reticulate band across elytra but with black base and apex of disc and explanate margin (Figs 23–24). Shape of reticulation and yellow to yellowish-red coloration of the band is very similar to the pattern of *O. augusta*. I have some doubts if the specimens belong to a new species or represent only aberrant form of *O. augusta*. More material is needed to confirm species status of this form.

Key to the *O. augusta* species group

1. Pronotum black or blue, elytral disc without or with thin yellow to red reticulation, or only posterolateral with broad reticulation 2
- . Pronotum red, whole elytral disc with broad red reticulation *Omaspides picaflourensis*
2. Dorsum partly reddish, at least with yellow or red reticulation 4
- . Dorsum completely black or blue, or explanate margin with indistinct dark red spot 3
3. Dorsum black, explanate margin of elytra black with more or less visible reticulate sculpture *Omaspides confusa* (black form)
- . Dorsum metallic blue, explanate margin of elytra black with indistinct dark red spot but without reticulate sculpture *Omaspides tenuicula*
4. Explanate margin of elytra with distinct red, reticulate sculpture 5
- . Explanate margin of elytra with large yellowish-red spot, but without reticulate sculpture *Omaspides bivittata*

5. Yellow or red reticulation forms pattern only on explanate margin or thin red reticulation on both explanate margin and disc but never forms broad band across elytra 6
- . Yellow reticulate pattern forms broad band across elytra *Omaspides* sp.
6. Reticulation of explanate margin broad and yellow, surface mostly yellow with black spot. Elytral disc black or with only posterolateral yellow reticulation, reticulate sculpture very low, indistinct *Omaspides augusta*
- . Reticulation of explanate margin thin and red, surface mostly black with red reticulation. Elytral disc with distinct thin and red reticulate sculpture on most of surface *Omaspides confusa* (red reticulate form)

ACKNOWLEDGEMENTS

Thanks to M. Barclay (Natural History Museum, London) for the loan of types of *O. tenuicula* Boheman, 1862 and *O. bivittata* Baly, 1872. Special thanks to R. Westerduijn (Tambopata, Peru) for the material of *Omaspides picaflourensis* and L. Sekerka (České Budějovice, Czech Republic) for additional material of *Omaspides confusa*. I am greatly thankful to two anonymous reviewers for valuable corrections and additions. This paper was supported by scientific grant of the Zoological Institute, University of Wrocław, 1018/IZ/2010.

REFERENCES

Baly, J. S. 1872. Descriptions of some species of Cassididae new to science. *Trans. Ent. Soc. Lond.*, 1872: 59–72.

Blackwelder, R. E. 1946. Checklist of the Coleopterous insects of Mexico, Central America, the West Indies, and South America, part 4. *Bull. Smithson. Inst. USNM*, 185: 733–757.

Boheman, C. H. 1856. *Catalogue of Coleopterous Insects in the collection of the British Museum, Part IX, Cassididae*. London.

Boheman, C. H. 1862. *Monographia Cassidarum. Tomus quartus. Holmiae*, 504 pp.

Borowiec, L. 1996. Faunistic records of Neotropical Cassidinae (Coleoptera: Chrysomelidae). *Polskie Pismo Entomologiczne*, 65: 119–251.

Borowiec, L. 1998. Review of the Cassidinae of Ecuador, with a description of thirteen new species (Coleoptera: Chrysomelidae). *Genus, Wrocław*, 9: 155–246.

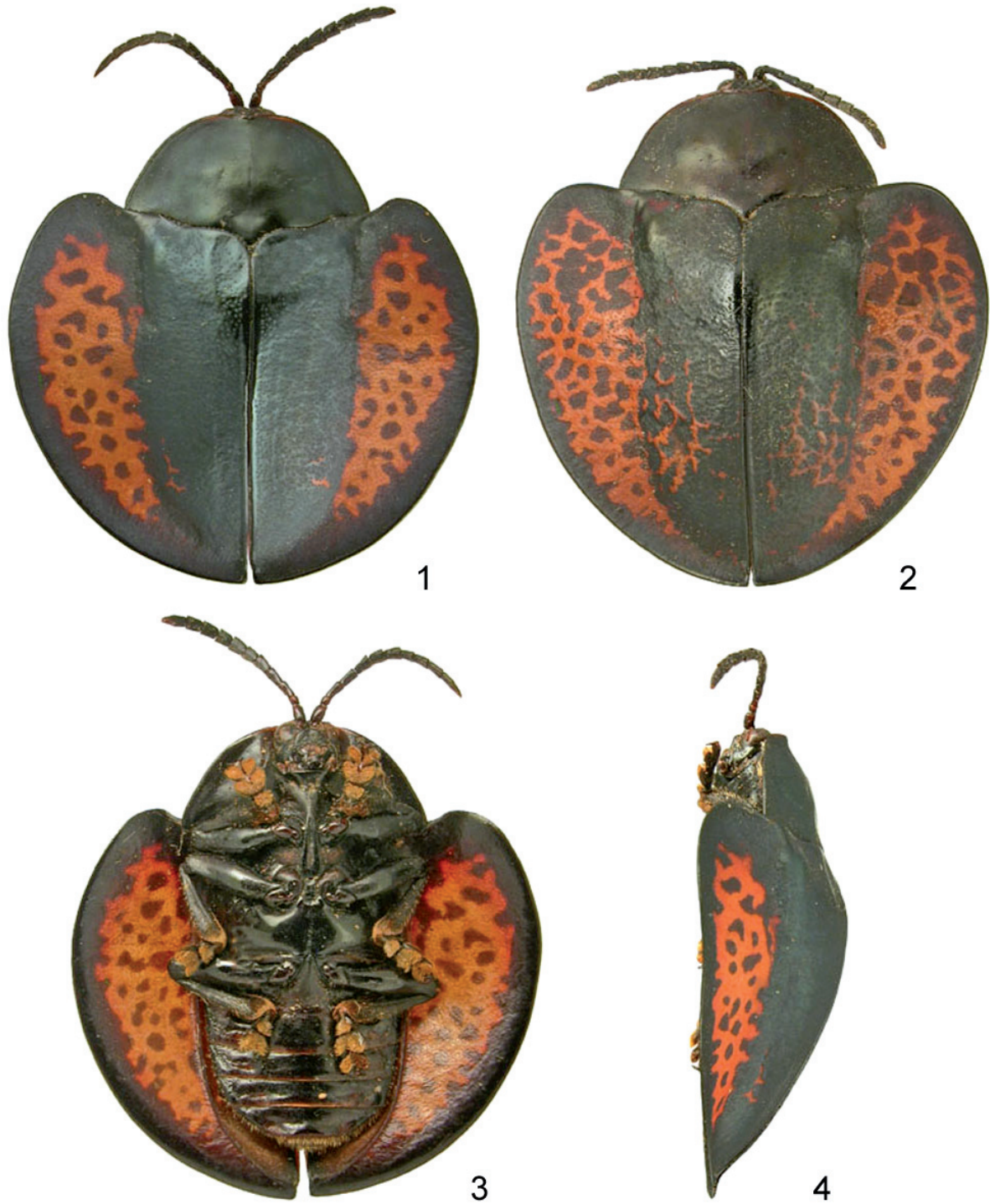
Borowiec, L. 1999. A world catalogue of the Cassidinae (Coleoptera: Chrysomelidae). *Biologica Silesiae, Wrocław*, 476 pp.

Borowiec, L. 2002. New records of Neotropical Cassidinae, with description of three new species (Coleoptera: Chrysomelidae). *Genus*, 13: 43–138.

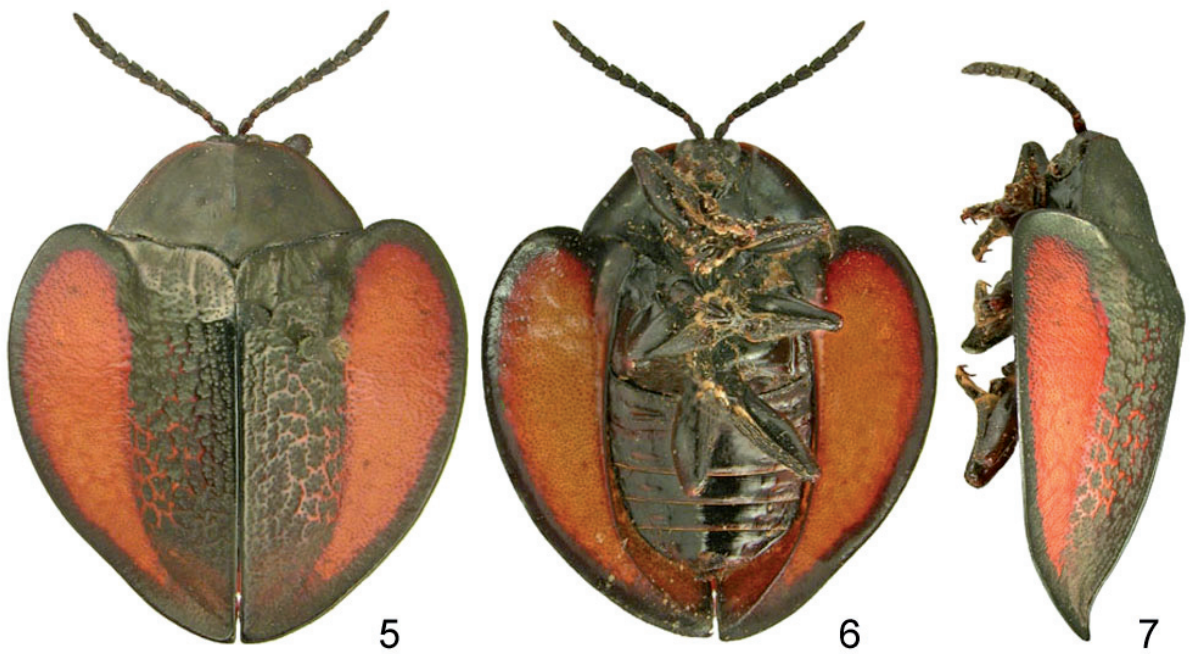
- Borowiec, L. 2003. *Omaspides boliviana* sp. nov., with a key to *Omaspides* s. str. (Coleoptera: Chrysomelidae: Cassidinae). *Genus*, Wrocław, 14: 397–402.
- Borowiec, L. 2009. New records of Neotropical tortoise beetles (Coleoptera: Chrysomelidae: Cassidinae). *Genus*, 20: 615–722.
- Borowiec, L. and J. Świętojańska. 2010. Cassidinae of the world – an interactive manual (Coleoptera: Chrysomelidae). Permanent electronic publication: www.biol.uni.wroc.pl/cassidae/kataloginternetowy/index.htm (installed in 2002).
- Chevrolat, A. 1837. [new taxa]. *In*: Dejean, P. F. M. A. *Catalogue des Coléoptères de la collection de M. le Comte Dejean*, 2nd édition, livr. 5. Paris, 361–442 pp.
- Gemminger, Dr., B. de Harold. 1876. *Catalogus Coleopterorum hucusque descriptorum synonymicus et systematicus*. Tom XII, Monachii, 3823 + LXXIII pp.
- Spaeth, F. 1914. Chrysomelidae: 16. Cassidinae. *In*: Junk W. and Schenkling S. (eds.). *Coleopterorum Catalogus*, Pars 62, W. Junk, Berlin, 182 pp.
- Spaeth, F. 1937. Mitteilungen über Cassidinen mit besonderer Berücksichtigung der Sammlung des Naturkundemuseums der Stadt Stettin (Col.). *Stettin. Entomol. Ztg.*, 98: 79–95.
- Spaeth, F. 1942. Cassidinae (Col. Chrysom.). *In*: Titschack E. (ed) *Beiträge zur Fauna Perus*, 2: 11–43.

Received: September 6, 2010

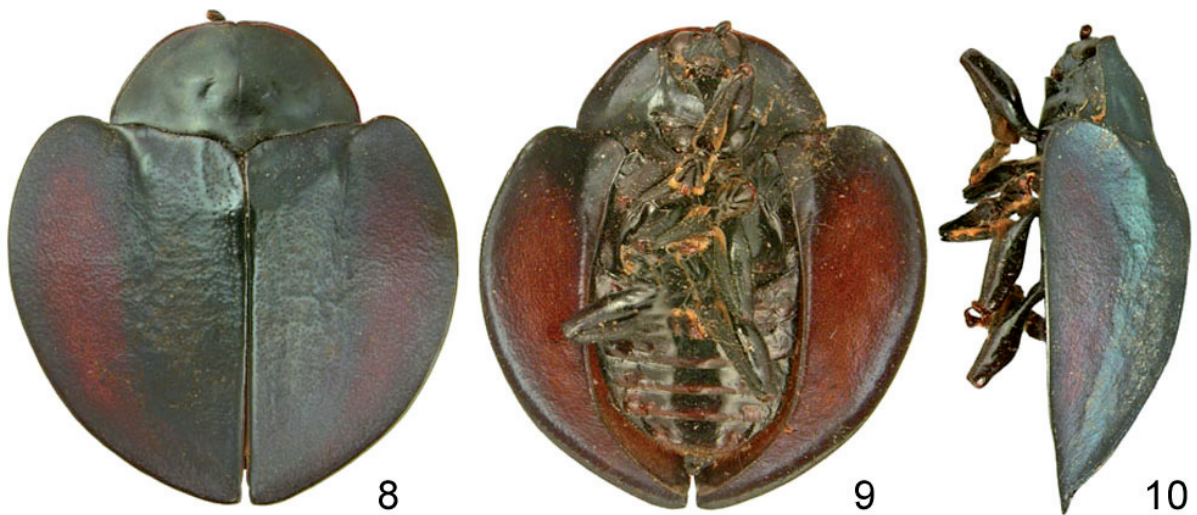
Accepted: November 6, 2010



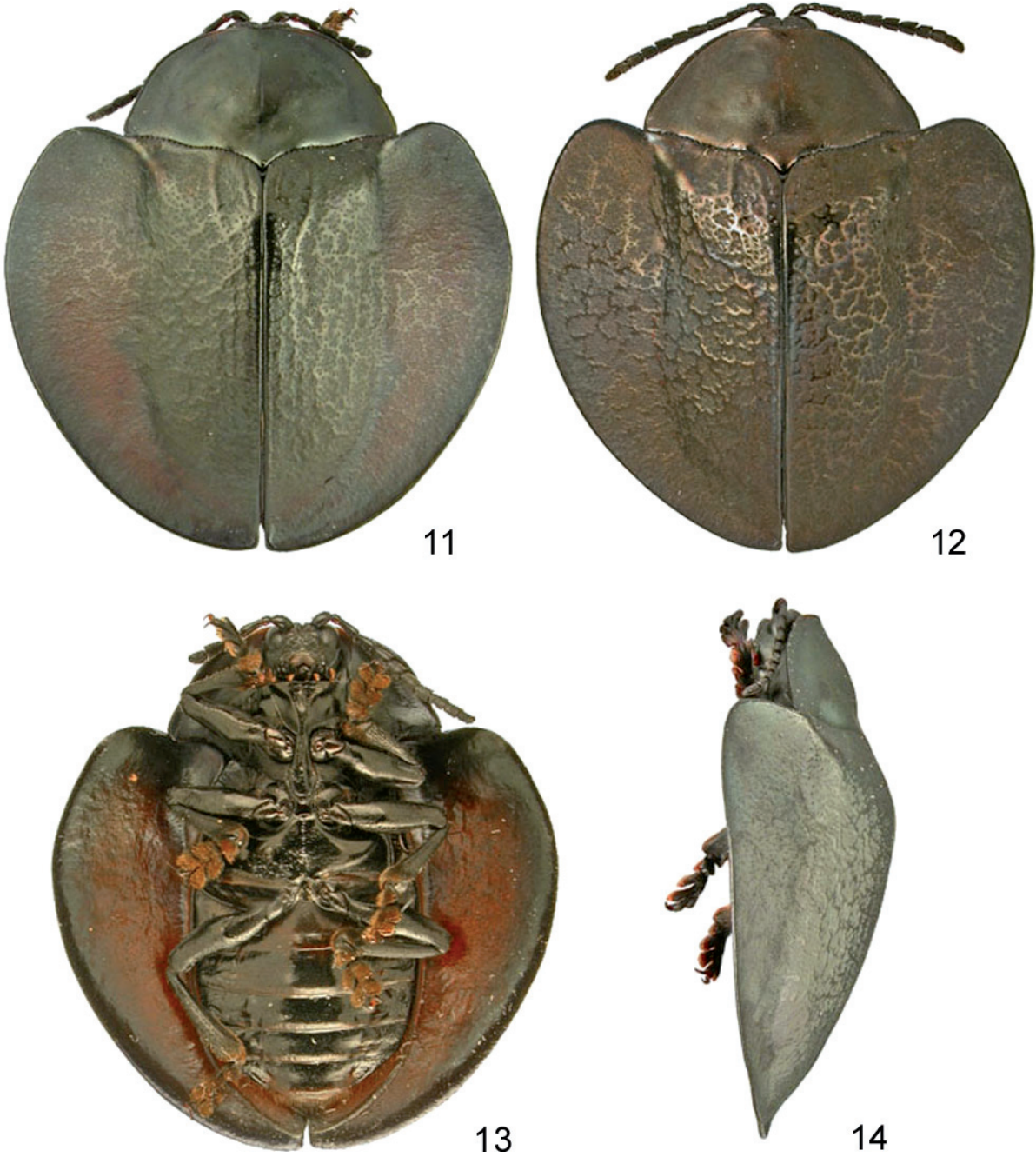
Figures 1–4. *Omaspides augusta* Boh. (1) Typical form dorsal; (2) aberration dorsal; (3) typical form ventral; (4) typical form lateral.



Figures 5–7. *Omaspides bivittata* Baly. (5) Holotype dorsal; (6) holotype ventral; (7) holotype lateral.



Figures 8–10. *Omaspides tenuicula* Boh. (8) Holotype dorsal; (9) holotype ventral; (10) holotype lateral.



Figures 11–14. *Omaspides confusa* sp. nov. (11) Holotype dorsal; (12) dark paratype dorsal; (13) holotype ventral; (14) holotype lateral.



15



16

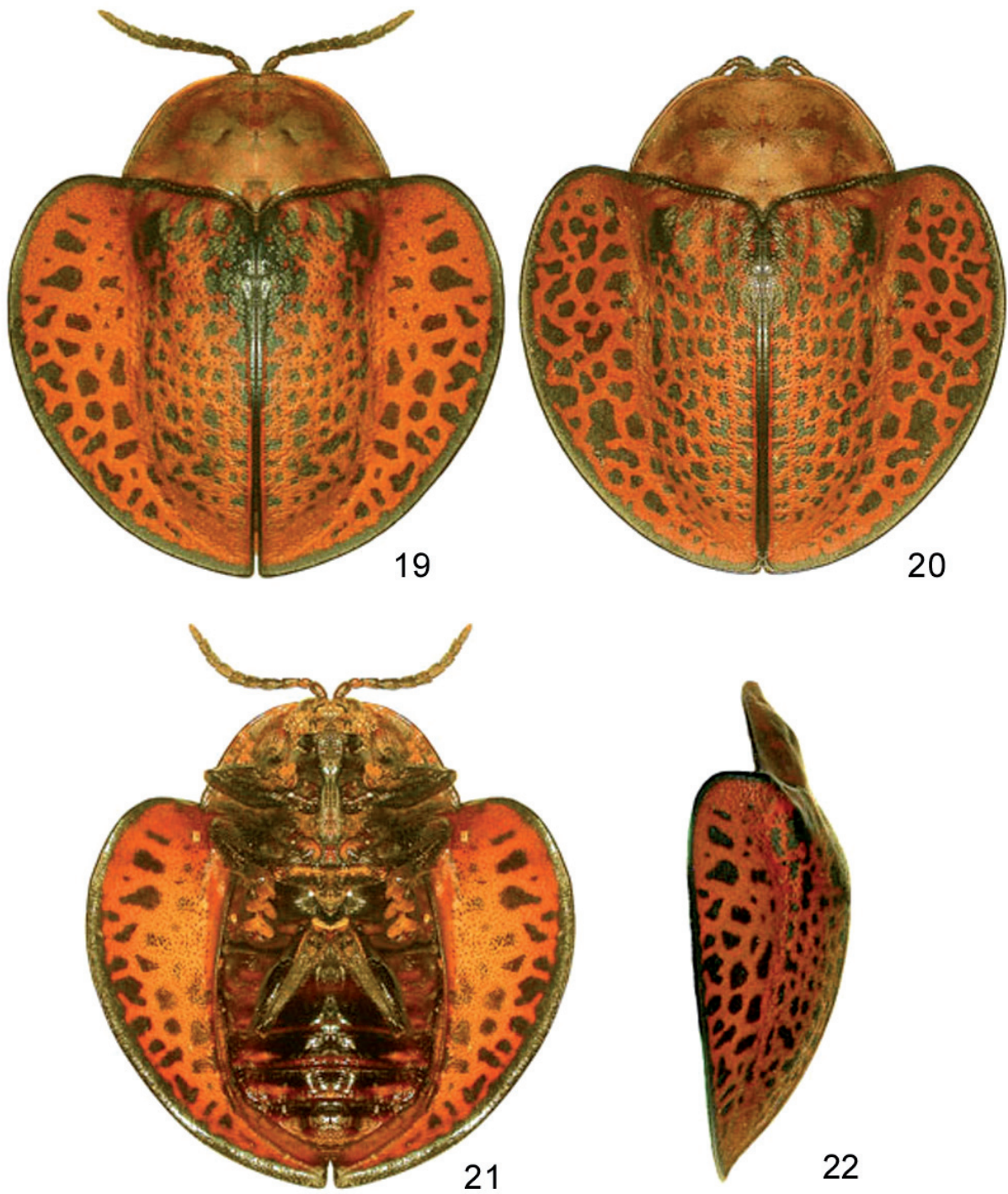


17

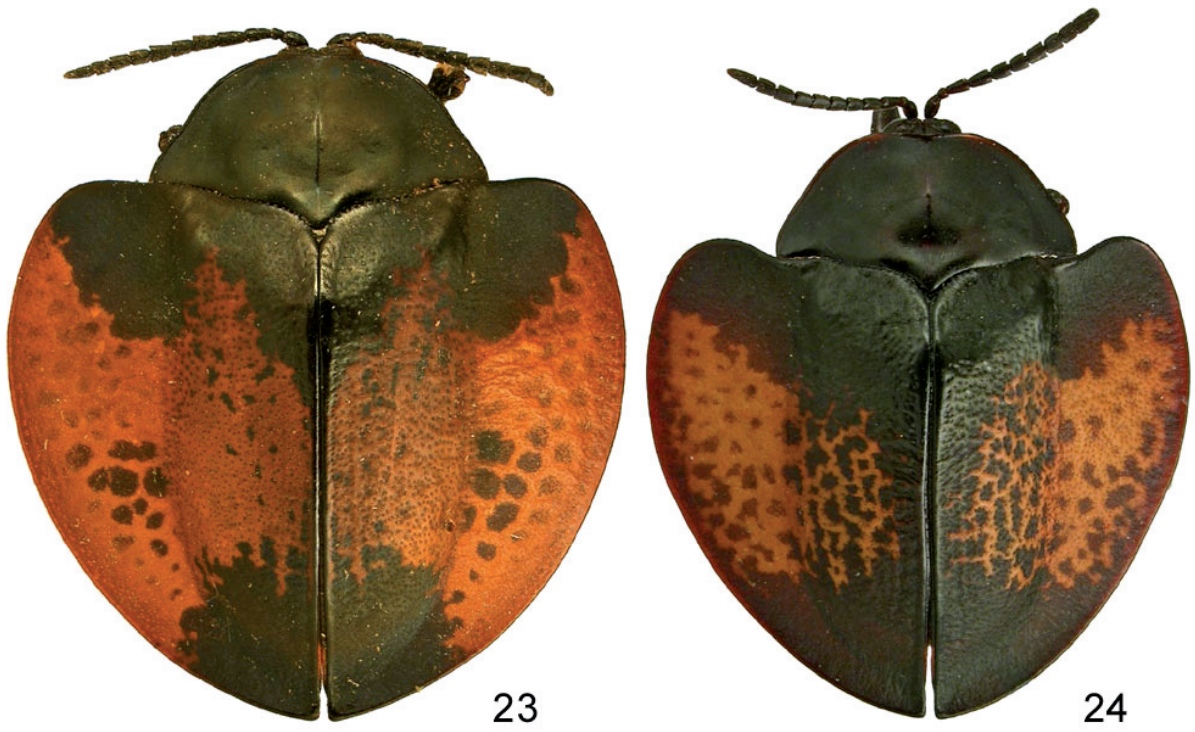


18

Figures 15–18. *Omaspides confusa* sp. nov. (15–16) Red reticulate paratypes dorsal; (17) red reticulate paratype ventral; (18) red reticulate paratype lateral.



Figures 19–22. *Omaspides picaflourensis* sp. nov. (19) Holotype dorsal; (20) paratype dorsal; (21) holotype ventral; (22) holotype lateral.



Figures 23–24. *Omaspides* sp. (23) specimen from Rio Pachitea; (24) specimen from Tingo Maria.